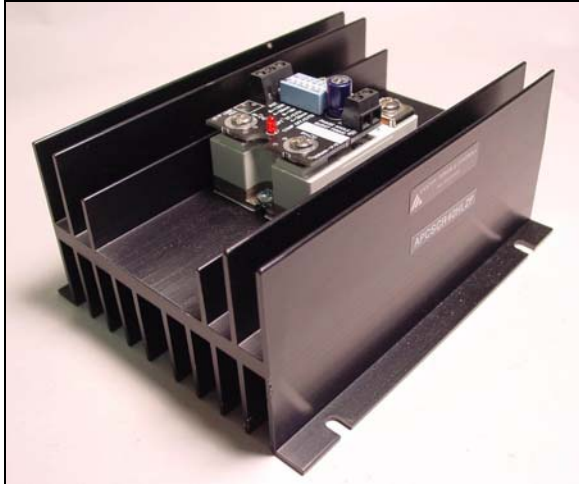




"COOL ONE" PANEL MOUNT Zero Cross Time Based SSR Controller



APCSCR40HLZP

Anacon's "Cool One" heat sink design is by far one of the most unique ideas to come along in quite some time. Read about its amazing features and how Anacon can help with your design regardless of whose Solid State Relays you're using. "Cool One" works better!

Standard "COOL ONE" Features:

- Current Ratings from 0.1A to 50A
- Standard LED Status Indicator
- UL/cUL Recognized TUV Approved & CE Compliant Version
- **Input Options: 4-20mA, 0-10V, 0-5V, 0-135 Ω, Potentiometer**
- Built in Transient Protection
- Configurable for 4 different cycle times
- Drives multiple solid state relays (SSRs)
- Mounts on SSR input screws
- Touch-safe cover compatible
- Limited 2 Year Warranty
- For Safety & Noise Immunity Compliance information, see page ____.

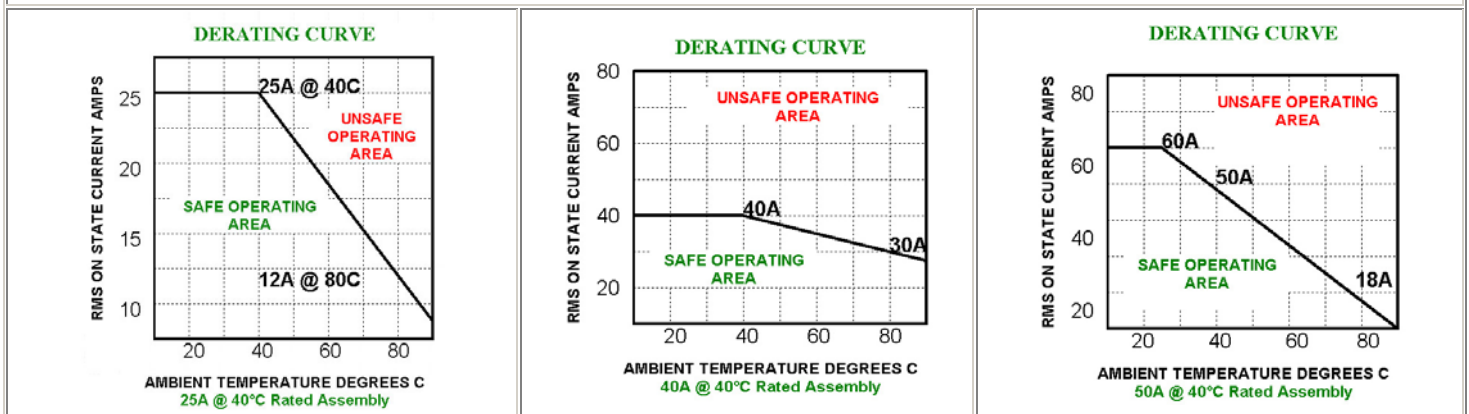
SPECIFICATIONS

| PART NUMBER | INPUT RANGE | ASSEMBLY LOAD CURRENT (AMPS AC) | LINE VOLTAGE | PEAK VOLTAGE | RELAY RATING |
|--------------|---|------------------------------------|--------------|--------------|--------------|
| APCSCR25HLZP | 4-20mA, 0-10Vdc, 0-5Vdc, 0-135 Ω, Potentiometer | .1A-25A Max @ 40 Degrees C Ambient | 48-660 Vac | 1200V Peak | 25A |
| APCSCR40HLZP | 4-20mA, 0-10Vdc, 0-5Vdc, 0-135 Ω, Potentiometer | .1A-40A Max @ 40 Degrees C Ambient | 48-660 Vac | 1200V Peak | 40A |
| APCSCR50HLZP | 4-20mA, 0-10Vdc, 0-5Vdc, 0-135 Ω, Potentiometer | .1A-50A Max @ 40 Degrees C Ambient | 48-660 Vac | 1200V Peak | 50A |

Notes:

- Ratings based upon 100% duty cycle for 20 minutes or 80% duty cycle continuous.
- Ratings based upon relays being mounted either individually or side by side with zero spacing.
- Cool One's unique construction allows better performance than conventional heat sink designs even when mounted side by side.

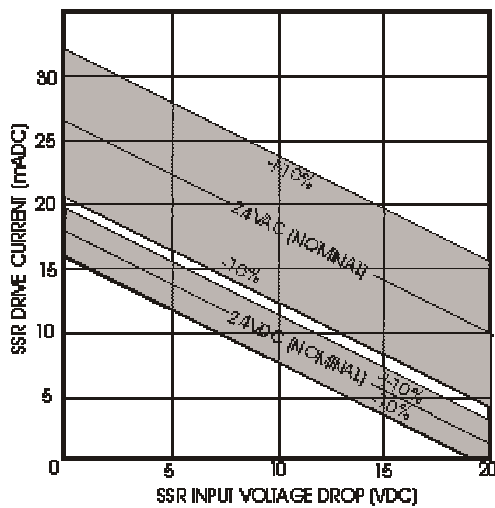
THERMAL CURVES



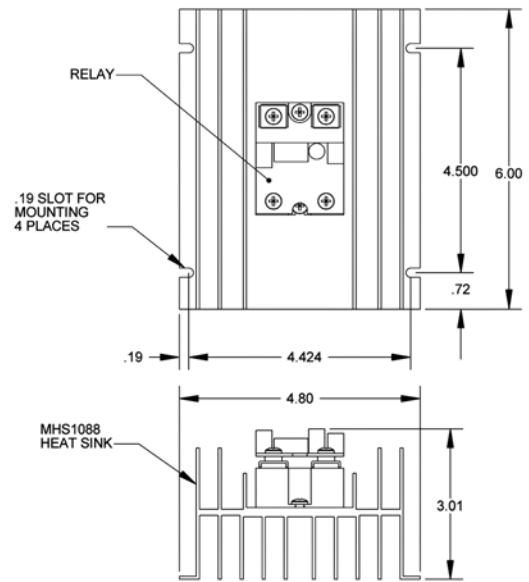


Control Information

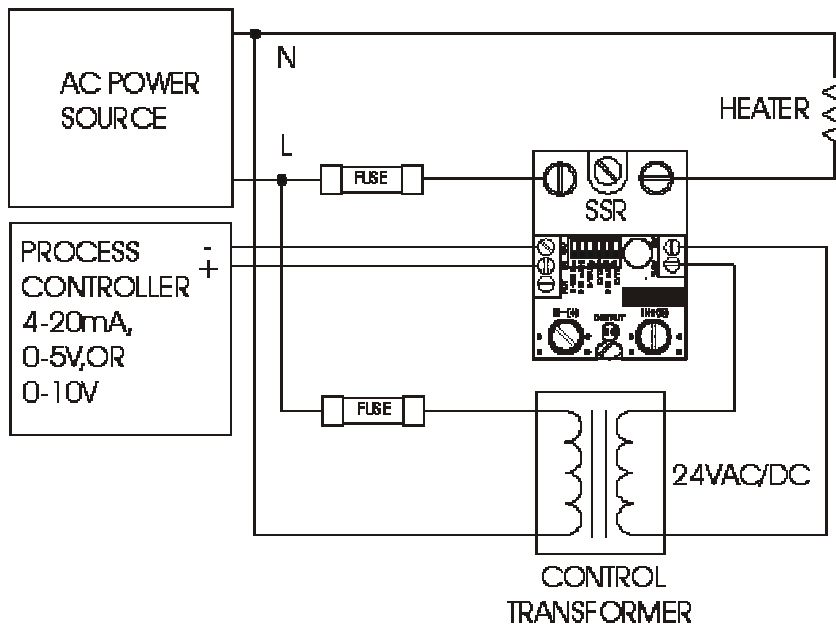
The Zero Cross SSR Controller output drive is a DC pulsed current limited drive signal of 10V/15mA (24VAC power) or 10V/9.5mA (24VDC power). This is more than enough current for driving most 3-32V standard SSRs, however it is still important to review the data sheet for the SSR you would like to use for compatibility with the Zero Cross SSR Controller's output drive. The following graph will allow you to verify the SSR's compatibility with the APCSCR1Z over wide input voltage variations.



Mechanical Drawing



Typical Wiring Diagram (4-20mA, 0-5V, 0-10V Inputs)



Command Input

| Command Input | 1 | 2 | 3 | 5 |
|---|----------|----------|-----|-----|
| 0-5V (Default) | Off | Off | Off | Off |
| Potentiometer | Off | Off | Off | Off |
| 0-10V | Off | Off | On | Off |
| 4-20mA | Off | On | Off | On |
| 1-5V | Off | Off | Off | On |
| 2-10V | Off | Off | On | On |
| 0-135Ω* | On | Off | Off | Off |
| *Module must be ordered as APCSCR1Z-135 for 0-135Ω input support. | | | | |
| 135Ω input support is only usable with 24VAC Power. | | | | |
| Cycle Time | 4 | 5 | | |
| 200mS | Off | Off | | |
| 1 Second | Off | On | | |
| 10 Seconds | On | Off | | |
| 100 Seconds | On | On | | |
| Contact Anacon Power & Controls for applications assistance - 800-466-9080. | | | | |