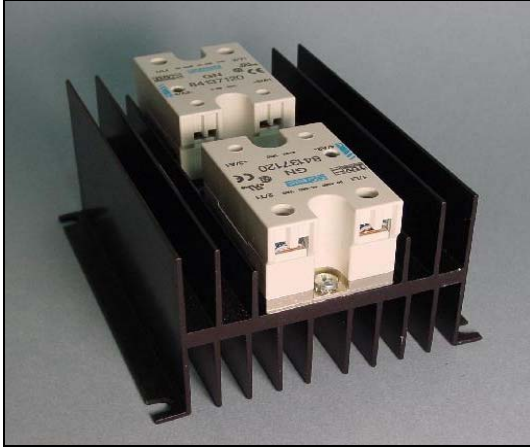




**“COOL ONE” DUAL PANEL MOUNT Solid State Relay Assembly (SSR)**



Anacon's "Cool One" heat sink designs provide a thermally optimized Panel mounting platform for today's high performance solid state relays. The listings below provide the actual load currents that each part type will support. If you're not sure about how to select the correct product for your application, call Anacon, toll free and discuss your application with us.

**Standard "COOL ONE" Features:**

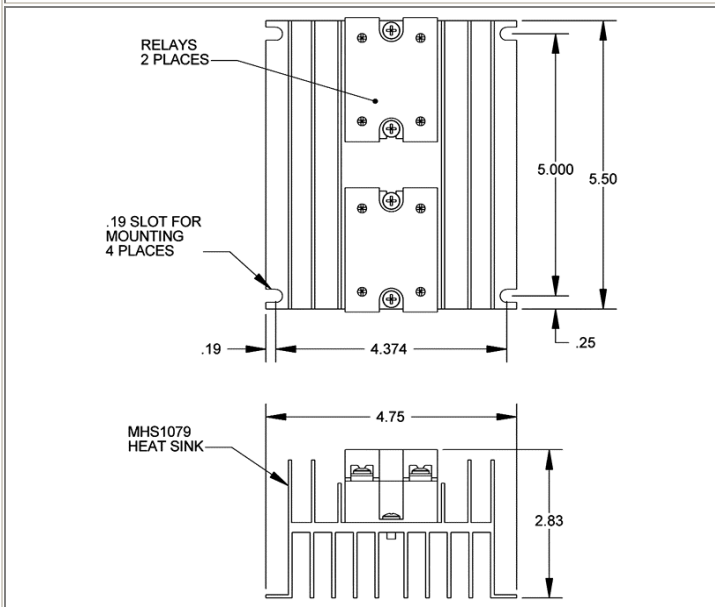
- All Anacon SSR Assemblies use relays tested to UL508A SCCR standards.
- Current Ratings from 0.1A to 25A / Relay
- Zero Cross & Random Turn On Relays
- Regulated Inputs- Back to Back SCR Design
- Standard Relays, UL/cUL Recognized, TUV Approved & CE Compliant Versions
- IP20 Built in Touch Safe features
- Strip Wire Connections
- SSR Monitor Cards Available, add suffix (-SM)
- Current Transformer Cards Available, add suffix (-CT)
- For Safety & Noise Immunity Compliance information, see page \_\_\_\_.

**SPECIFICATIONS**

PART NUMBER	INPUT RANGE	TERMINAL TYPE	LOAD CURRENT	LINE VOLTAGE	OPERATING FEATURE	TRANSIENT VOLTAGE
APC7120DP	3-32Vdc	Stripped Wire IP20	.1A to 25A/ Relay @ 40 Degrees C Ambient	48-660Vac	Zero Cross	1200V Peak
APC7121DP	90-280Vac	Stripped Wire IP20	.1A to 25A/ Relay @ 40 Degrees C Ambient	48-660Vac	Zero Cross	1200V Peak
APC4120DP	3-32Vdc	Ring Terminal	.1A to 25A/ Relay @ 40 Degrees C Ambient	24-280Vac	Zero Cross	600V Peak
APC4121DP	90-280Vac	Ring Terminal	.1A to 25A/ Relay @ 40 Degrees C Ambient	24-280Vac	Zero Cross	600V Peak

- Notes:**
- **Combined output current must not exceed 50 amps.**
  - Ratings based upon 100% duty cycle for 20 minutes or 80% duty cycle continuous.
  - Ratings based upon relays being mounted either individually or side by side with zero spacing.
  - Ring terminal versions available with Touch Safe Covers upon request.
  - For Random Turn on Version P/N's call 800-466-9080.
  - Cool One's unique construction allows better performance than conventional heat sink designs even when mounted side by side.
  - Monitor Output faults or load alarms with Anacon's SSR Monitor Cards available for all DIN mount relays. See APC MON datasheet for details, page \_\_\_\_.

**MECHANICAL DRAWING**



**THERMAL CURVE**

