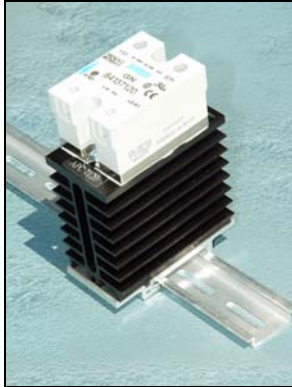




“COOL ONE” DIN MOUNT Solid State Relay Assembly (SSR)



IP20 DIN Relay
Integral Touch Safe Cover



IP00 DIN Relay
Removable Touch Safe Cover

Anacon's "Cool One" heat sink designs provide a thermally optimized DIN mounting platform for today's high performance solid state relays. The listings below provide the actual load currents that each part type will support. If you're not sure about how to select the correct product for your application, call Anacon, toll free and discuss your application with us.

Standard "COOL ONE" Features:

- All Anacon SSR Assemblies use relays tested to UL508A SCCR standards.
- Current Ratings from 0.1A to 40A
- Zero Cross Relays
- Output voltages from 24Vac to 660Vac
- Standard DC or AC Control Versions
- Standard LED Status Indicator
- Regulated Inputs- Back to Back SCR Design
- Standard Built in Transient Protection
- Standard Relays, UL/cUL Recognized, TUV Approved & CE Compliant Version IP20 Touch Safe
- SSR Monitor Cards Available (IP00 Version only), add suffix (-SM)
- Current Transformer Cards Available, add suffix (-CT)
- For Safety & Noise Immunity Compliance information, see page ____.

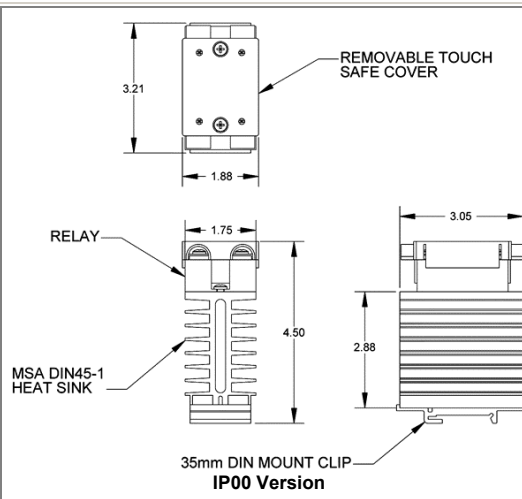
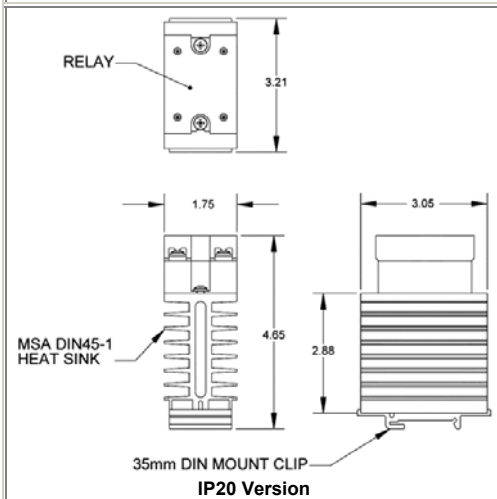
SPECIFICATIONS

PART NUMBER IP00	PART NUMBER IP20	INPUT RANGE	LOAD CURRENT	LINE VOLTAGE	TRANSIENT VOLTAGE
APC4020	APC7020	3-32Vdc	.1A-40A @ 40 Degrees C Ambient	24-280Vac	600V Peak
APC4021	APC7021	90-280Vac	.1A-40A @ 40 Degrees C Ambient	24-280Vac	600V Peak
APC4022	APC7022	18-36Vac	.1A-40A @ 40 Degrees C Ambient	24-280Vac	600V Peak
APC4120	APC7120	3-32Vdc	.1A-40A @ 40 Degrees C Ambient	48-660Vac	1200V Peak
APC4121	APC7121	90-280Vac	.1A-40A @ 40 Degrees C Ambient	48-660Vac	1200V Peak
APC4122	APC7122	18-36Vac	.1A-40A @ 40 Degrees C Ambient	48-660Vac	1200V Peak

Notes:

- Ratings based upon 100% duty cycle for 20 minutes or 80% duty cycle continuous.
- Ratings based upon relays being mounted either individually or side by side with zero spacing.
- Cool One's unique construction allows better performance than conventional heat sink designs even when mounted side by side.
- Monitor Output faults or load alarms with Anacon's SSR Monitor Cards available for all DIN mount IP00 relays. See APC MON datasheet for details, page ____.

MECHANICAL DRAWINGS



THERMAL CURVE

