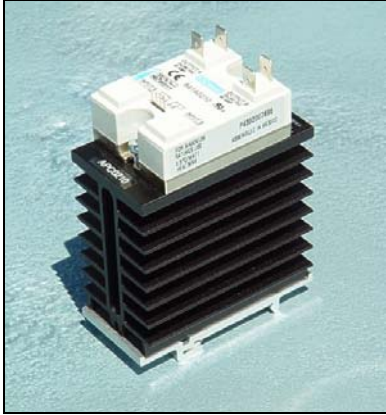
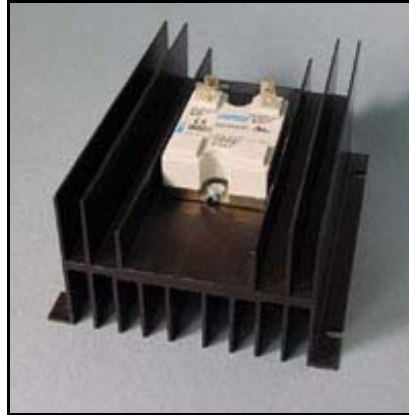




### “COOL ONE” DUAL OUTPUT Solid State Relay Assembly (SSR)



DIN Mount



Panel Mount

Anacon's "Cool One" heat sink designs provide a thermally optimized DIN and Panel mounting platform for today's high performance solid state relays. The listings below provide the actual load currents that each part type will support. If you're not sure about how to select the correct product for your application, call Anacon, toll free and discuss your application with us.

**Standard "COOL ONE" Features:**

- All Anacon SSR Assemblies use relays tested to UL508A SCCR standards.
- Current Ratings from 0.1A to 20A/Leg
- Zero Cross & RANDOM Turn On Relays
- Output voltages from 24Vac to 280Vac
- Standard DC Control Versions
- Regulated Inputs- Back to Back SCR Design
- Standard Relays, UL/cUL Recognized, TUV Approved & CE Compliant Version
- For Safety & Noise Immunity Compliance information, see page \_\_\_\_.

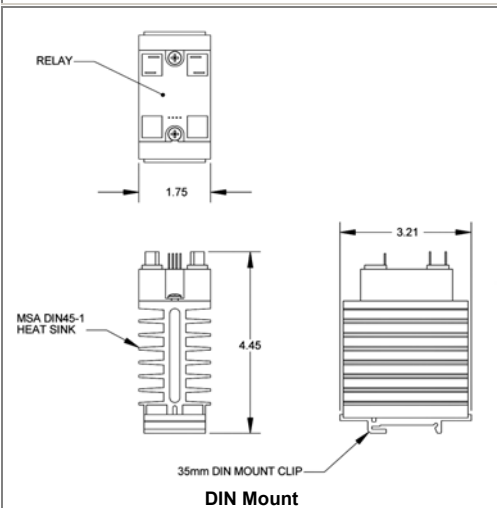
**SPECIFICATIONS**

PART NUMBER	INPUT RANGE	TERMINAL TYPE	LOAD CURRENT	LINE VOLTAGE	OPERATING FEATURES	TRANSIENT VOLTAGE
APC0000 (Zero Cross)	4-18Vdc	Spade Output - .040" Pin Input	.1A to 12A/Leg @40 Degrees C Ambient	24-280Vac	Individual Relay Control	600V Peak
APC0010 (Zero Cross)	17-32Vdc	Faston Output - .040" Pin Input	.1A to 12A/Leg @40 Degrees C Ambient	24-280Vac	Individual Relay Control	600V Peak
APC0200 (Zero Cross)	4-15Vdc	Faston Output - .040" Pin Input	.1A to 20A/Leg @40 Degrees C Ambient	24-280Vac	Individual Relay Control	600V Peak
APC0210 (Zero Cross)	17-32Vdc	Faston Output - .040" Pin Input	.1A to 20A/Leg @40 Degrees C Ambient	24-280Vac	Individual Relay Control	600V Peak
APC0100 (RTO)	4-15Vdc	Spade Output - .040" Pin Input	.1A to 12A/Leg @40 Degrees C Ambient	24-280Vac	Individual Relay Control	600V Peak
APC0110 (RTO)	17-32Vdc	Spade Output - .040" Pin Input	.1A to 12A/Leg @40 Degrees C Ambient	24-280Vac	Individual Relay Control	600V Peak
APC0300 (RTO)	4-15Vdc	Spade Output - .040" Pin Input	.1A to 20A/Leg @40 Degrees C Ambient	24-280Vac	Individual Relay Control	600V Peak
APC5010	4-15Vdc	Faston Output - Faston Input	.1A to 20A/Leg @40 Degrees C Ambient	48-660Vac	Individual Relay Control	1200V Peak
APC5020	10-30Vdc	Ring Terminals Output - Terminal Block Input	.1A to 20A/Leg @40 Degrees C Ambient	24-600Vac	Individual Relay Control	1200V Peak

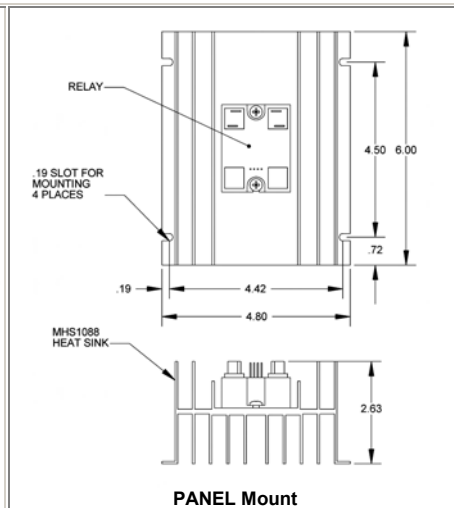
**Notes:**

- Combined output current must not exceed 40amps.
- For Panel Mount version, add suffix (P) to part number. (Example – APC0000P)
- Ratings based upon 100% duty cycle for 20 minutes or 80% duty cycle continuous.
- Ratings based upon relays being mounted either individually or side by side with zero spacing.
- Cool One's unique construction allows better performance than conventional heat sink designs even when mounted side by side.

**MECHANICAL DRAWINGS**



DIN Mount



PANEL Mount

**THERMAL CURVE**

